

Testimonials

“From the scan results we made a determined decision to use those rams which were ELITE or High Standard on the FALKIRK INDEX”

“We are delighted with the results we have achieved so far and with FALKIRK’S input, who knows how far we can push the boundaries”

“The concept of the FALKIRK network is such a bonus. We are far more capable of making sensible purchases when we have all the information at our finger tips”

**Tracey and Andrew Neal
Sheep & Beef Breeders NZ**

“The FALKIRK INDEX has shown how to use technology to produce something simple that works to earn money”

**Dr Clive Dalton
Senior Research Consultant**

“I believe that the FALKIRK INDEX can add value to a sheep and beef farmers business. It can also add a significant point of difference to our company’s Business”

**Jerry Trebilcock, Regional Manager
Williams and Kettle Ltd**

FALKIRKINDEX 

NEW ZEALAND
PO Box 109 Pio Pio
King Country NZ

Phone **+0011 64 7 877 8345**

Fax +0011 64 7 877 8845

Email infoNZ@falkirkindex.com

Web www.falkirkindex.com

AUSTRALIA

PO Box 5063 Lavington
NSW 2708 Australia

Phone **+61 2 6043 1328**

Fax +61 2 6043 2618

Email infoAU@falkirkindex.com

Web www.falkirkindex.com

Origin of FALKIRK INDEX

The FALKIRK INDEX
SYSTEM is a new live animal
assessment concept that will
revolutionise the world wide
Red Meat Industry.

It has been developed in New Zealand by Mr Ian Walsh of the Falkirk Scientific Foundation since the mid 1980's. It came about with Falkirk doing extensive live scanning of lambs to examine carcass traits and then 'bone out' trials of the bodies to assess the accuracy of the scanning.

Today the system has been
developed to assess live cattle,
sheep, deer, goats and pigs.

FALKIRK INDEX is now commercially available
through-out New Zealand and Australia.

FALKIRKINDEX 



A new concept
revolutionising the
meat industry

What is the FALKIRK INDEX?

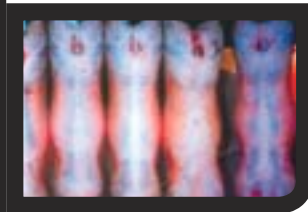
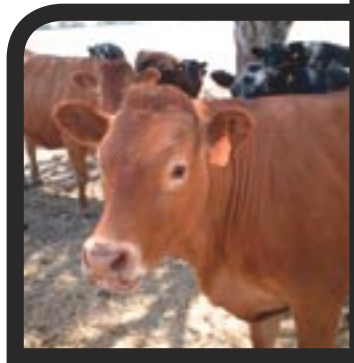
The FALKIRK INDEX (FI) system is a holistic approach to livestock measurement, assessment and selection.

The unique indexing system was developed in New Zealand over two decades to create one simple index value known as the FALKIRK INDEX, which is used to estimate the retail meat value of live animals.

The system uses ultrasound scanning technology to scan the livestock carcasses, gather data and produce an accurate index value through developed formulation.

The Index very simply helps people make a very important decision from actual data.

FALKIRK INDEX empowers producers to select and purchase genetics with surety and confidence.



How the FALKIRK INDEX can help you?

Farmers

- It is simple to assess each animal's Index value and to rate stock from the highest to the lowest.
- Used for determining the selection of breeding stock.
- Assists in efficient production and achieving optimal returns at the 'Farm Gate'.
- Assists in marketing of stock to fellow breeders, and meat buyers.
- An objective tool to function a progeny test analysis.

Wholesalers / Butchers / Retailers

- Assists in clever stock selection for efficient processing with higher success of carcasses meeting specifications.
- Assists in lower waste disposal requirements which is a massive gain for society and the environment.
- Maximises the financial market return of the product.

FALKIRK INDEX is an objective analysis that indicates superior genetics

Sire Analysis Summary

→ A summary of FALKIRK INDEX data from progeny enables the breeding value of an animal to be determined. Example below highlights that breeder No.2 had the highest retention of progeny at 100%.

Breeder	Elite%	Standard%	Sub Standard%	Retention factor
1	25	33.3	41.7	58.3
2	33.3	66.6	0	100
3	0	25	75	25
4	22.2	55.5	22.2	77.7

Example of indexing

- The FALKIRK INDEX is displayed in a format making it easy to make an informed decision.
- Data is displayed for ease of cross referencing, indicating highest to lowest value.

FALKIRK INDEX AUSTRALIA							
Name:	I & V Martin	Best Breed:	Bulls				
Address:	Table Top	Sex:					
Phone No:	02 8528 2211	Age:	04/10/01				
Fax:		Owner:	Max Bowerman				
Page:	2 of 2	Operator:					
SI Type	Lot No	Sex	Age	Weight	SI	SIK Index	INDEX
Agred Bulls							
815-D	8	5	2.2	136.04		4085.8	
715	865-D	5.5	5	130.87		4875.3	
1257	815-D	4	5	129.79		2710.9	
1302	885-D	5	7.5	124.19		2385.8	
1308	885-D	4	7	98.34		1943.8	
271 Bulls							
105	105-D	2	5	130.80		2580.8	
106	105-D	5	5.5	113.68		2094.8	
107	105-D	6	5.5	115.04		2057.8	